

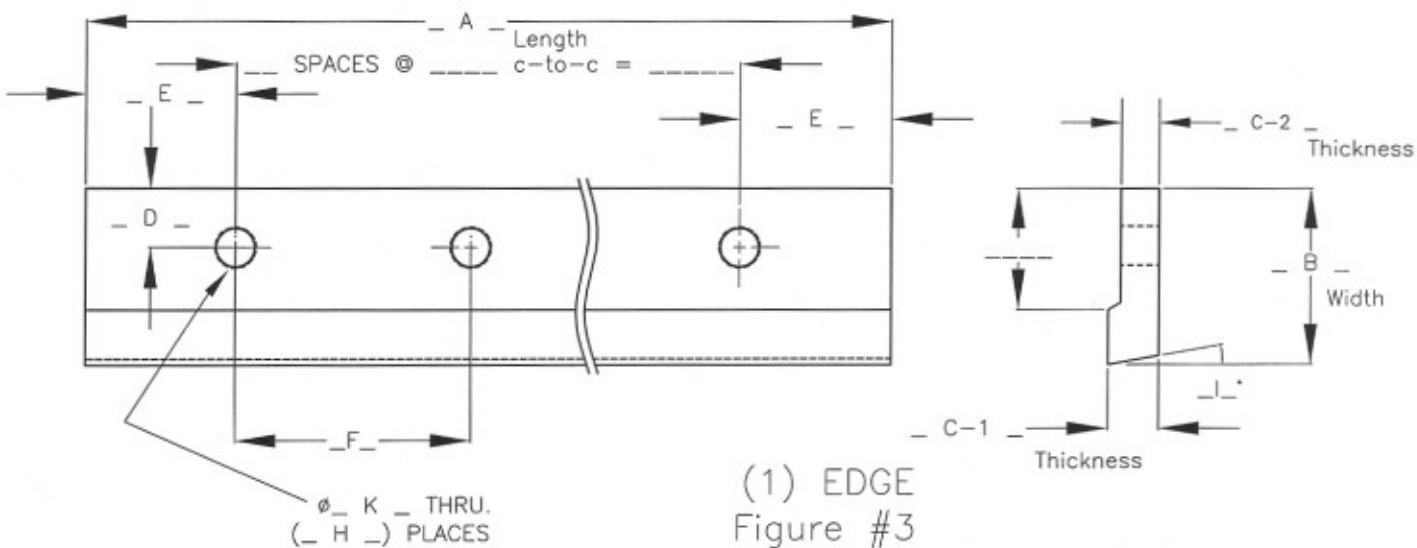
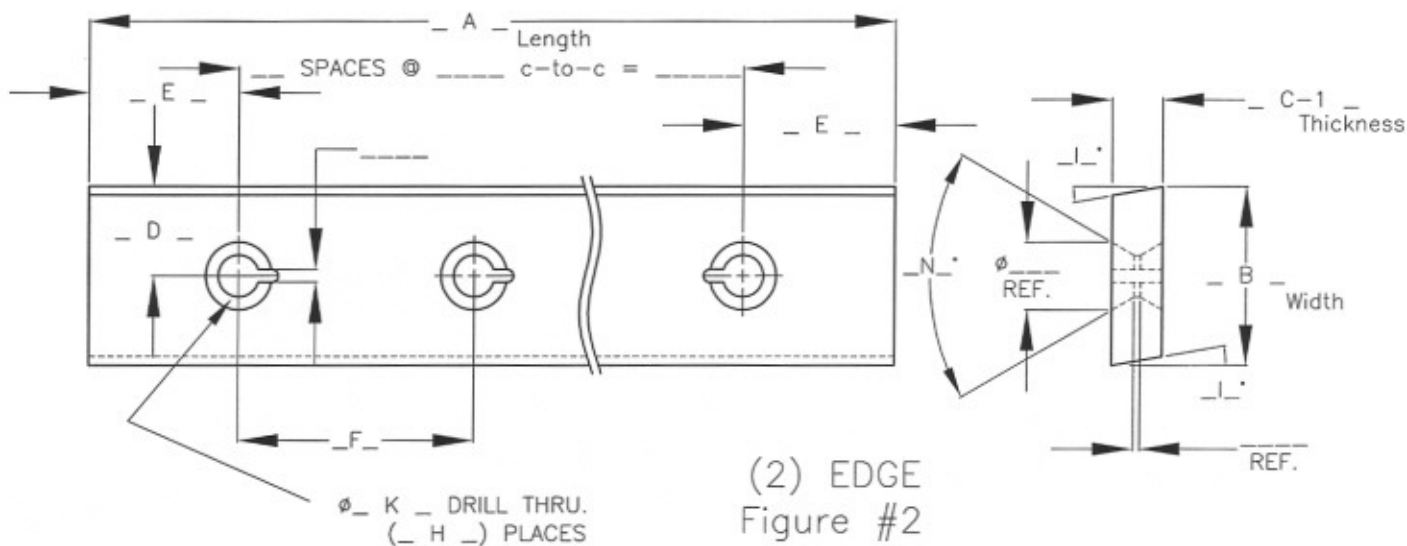
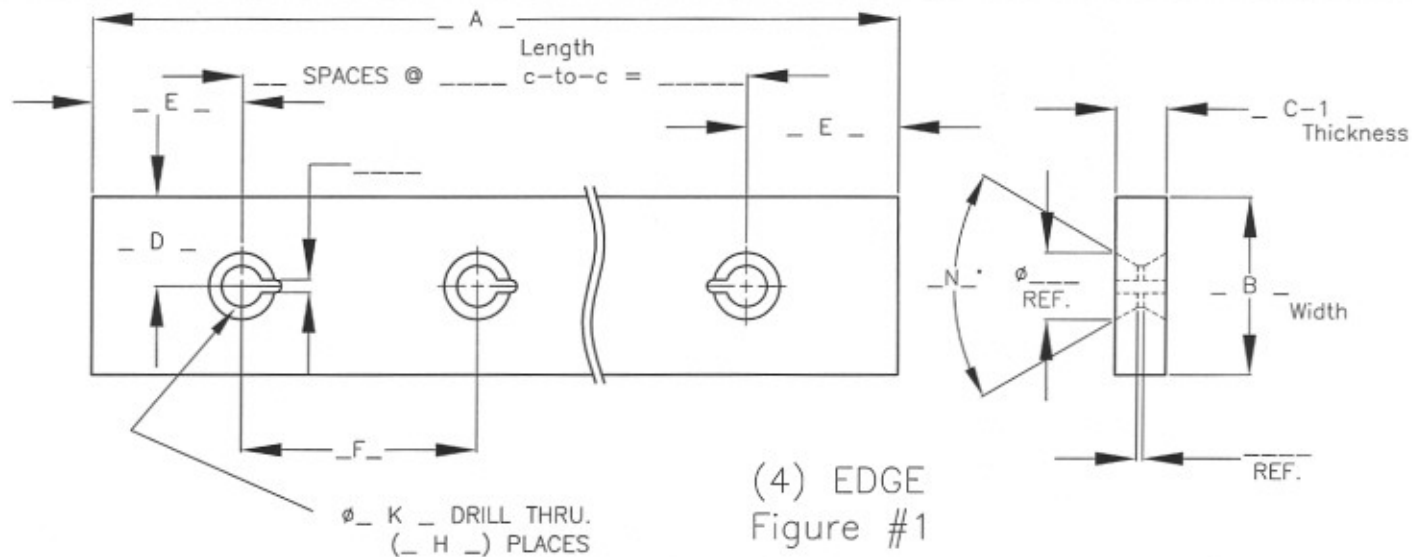


INTERNATIONAL KNIFE & SAW, INC.

FLORENCE, SC 29501  
(800) 354-9872  
FAX # (843) 664-1103  
www.iksinc.com

# SHEAR BLADE SPECIFICATION FORM

( PAGE 1 OF 2 )





INTERNATIONAL KNIFE & SAW, INC.

FLORENCE, SC 29501

(800) 354-9872

FAX # (843) 664-1103

www.iksinc.com

## SHEAR BLADE SPECIFICATION FORM

( PAGE 2 OF 2 )

### SHEAR BLADE SPECIFICATIONS:

DESCRIPTION OF KNIFE – USE FIGURES ON PAGE #1	FIGURE #1	FIGURE #2	FIGURE #3
A – LENGTH OF KNIFE			
B – WIDTH OF KNIFE			
C – 1 – THICKNESS OF KNIFE			
C – 2 – THICKNESS OF KNIFE			
D – DISTANCE FROM CENTER OF HOLE TO BACK OF KNIFE			
E – DISTANCE FROM END OF KNIFE TO CENTER OF 1ST HOLE			
F – DISTANCE FROM CENTER TO CENTER OF HOLES			
G – NUMBER OF ROWS OF HOLES			
H – TOTAL NUMBER OF HOLES			
I – DEGREE OF BEVEL			
J – LENGTH OF BEVEL			
K – SIZE OF HOLES – DRILLED			
TAPPED			
N – DEGREE OF COUNTERSINK			
DIAMETER OF COUNTERSINK			

### MACHINE SPECIFICATIONS:

DESCRIPTION OF MACHINE WHERE KNIFE USED:
MANUFACTURER:
MODEL:
CAPACITY:
MATERIALS BEING SHEARED:
THICKNESSES OF MATERIALS: