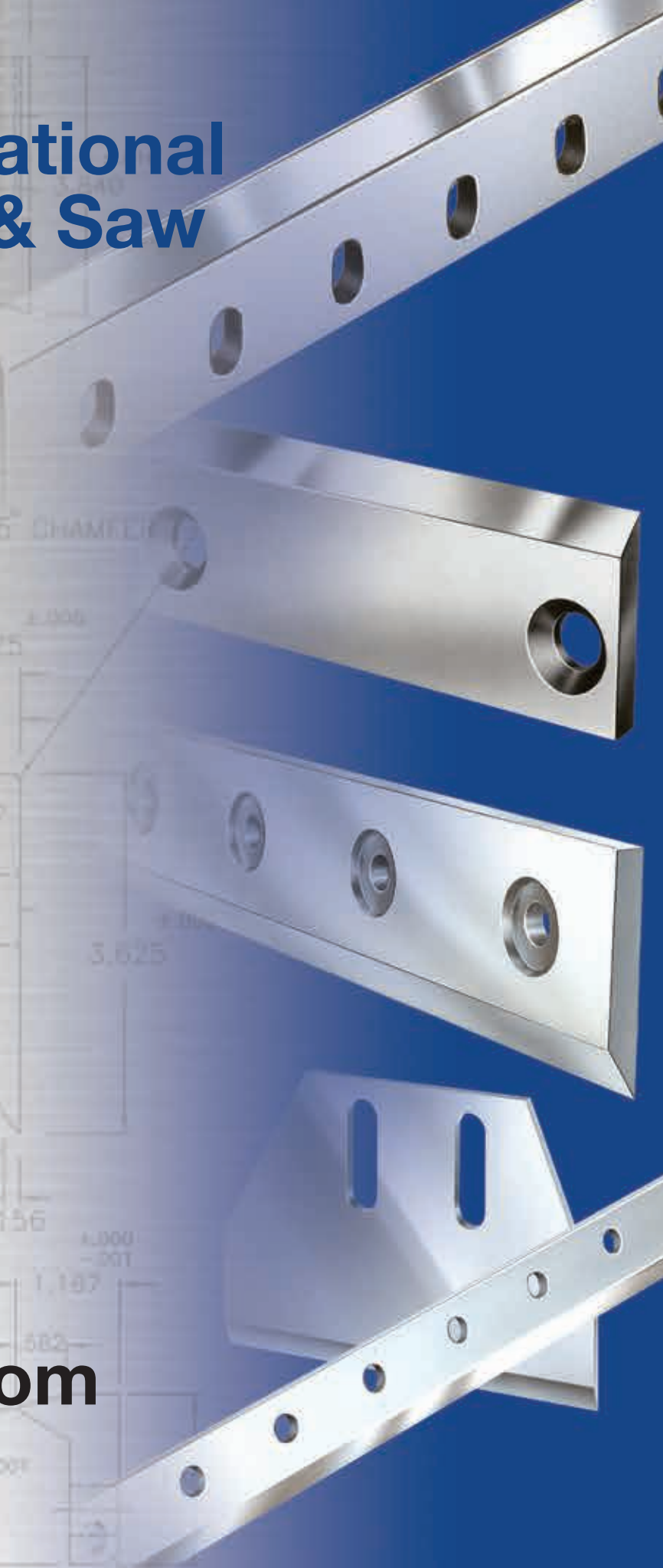




**International
Knife & Saw**

Knives for Plastic Recycling

www.iksinc.com



Rotor and Bed Knives for Granulating and Pelletizing Plastics

Advanced Machine Knife Technology

The cutting tool is a crucial factor in meeting industry's productivity and quality demands. Sharp knives that stay sharp longer produce the high quality required for virgin material blending accuracy. And knives that stay sharp longer require less machine downtime for resharpening, increase cutting efficiency and reduce cost.

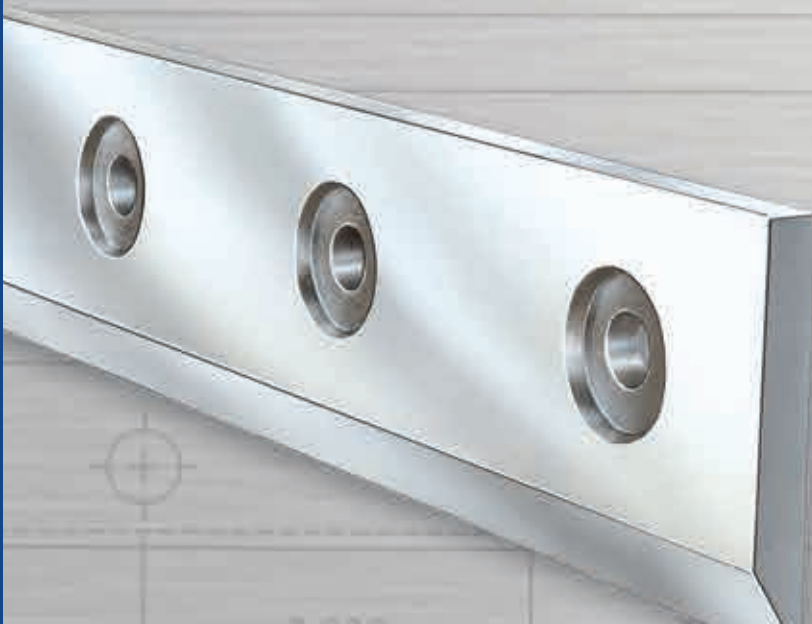
International Knife & Saw is one of the few major knife manufacturers to invest in the research and development of new, state-of-the-art cutting tools. Our technological advancements in material composition, production methods and manufacturing tolerances have made yesterday's processes and techniques virtually obsolete. Our specialization within the industry gives us unique insight into the peculiarities of the cutting and the variety of plastic and packaging materials.

Precision Manufactured

Rotor knives are precision ground in matched sets to exacting width tolerances and hand-honed razor sharp. Match grinding permits accurate machine setups to OEM specifications for efficient cutting and proper machine operation.

Butted knives are end-ground with an edge taper to facilitate alignment and maximize cutting efficiency. All bevels are finish ground and hand-honed for the ultimate in knife performance.

Our in-process quality control and inspection procedures assure individual knives meet design specifications. At final inspection, the dimensional integrity of each knife is documented before matched sets are packaged and inventoried.



Bevels and Grades

Based on the cutting characteristics of the material being processed, we carefully balance metallurgical composition, hardness and blade geometry. Special carbon steel, tool steel, high carbon/high chrome, high-speed steel, powdered metals or ceramic material grades are performance matched to your cutting application. Through our advanced metallurgy, the shock and wear resistance qualities in our knives give you exceptional value when granulating or pelletizing contaminated or filled materials. They are heat treated under sophisticated temperature controls to assure consistent and uniform hardness. In our specialized heat treating process, multiple tempering produces a tougher knife without compromising desired hardness levels.

Tooth profiles are precision form ground and finished to single digit RA surface finish values. Consistent size and burr-free cutting edges provide high quality, clean cutting performance for all types of packaging materials.

Performance-Matched

Our staff of experienced professionals are specialists in granulating and pelletizing knife applications. We can analyze your cutting application and recommend the knife best suited to your individual requirements. Proper knife selection is the key to achieving your quality and productivity goals.

Cost-Cutting Solutions

Let us prove to you what our high quality, "performance-matched" cutting tools can do for you. Our product specialists are ready to provide practical advice and cost-cutting solutions to your individual problems.





Made in the USA

International Knife & Saw, Florence, SC

The International Knife & Saw manufacturing facility in Florence, South Carolina produces the world's finest industrial knife blades supported by one of the industries most progressive inventories.



International Knife & Saw

1435 N. Cashua Road • Florence, SC 29501-0535

Tel: 1-843-662-6345 | Toll Free: 1-800-354-9872

Fax: 1-843-664-1103

www.iksinc.com